



Special Focus (Australia) : Restrospective : Bruce Beresford

Country : United States of America (USA)

Double Jeopardy

Double Jeopardy

1999 / Colour / 105 minutes / English



Director : Bruce Beresford

Producer : Leonard Goldberg

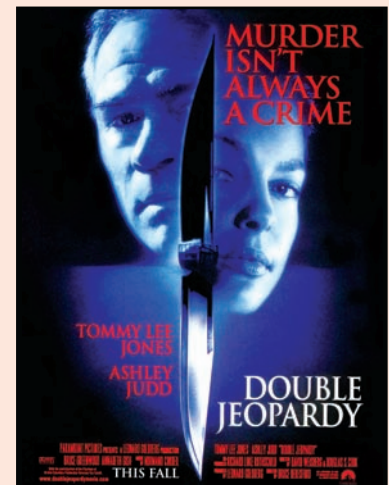
Cinematographer : Peter James

Editor : Mark Warner

Music : Normand Corbeil

Cast : Tommy Lee Jones, Ashley Judd, Bruce Greenwood, Annabeth Gish

Synopsis : *Double Jeopardy* (1999), directed by Bruce Beresford, is a gripping thriller that follows the tumultuous journey of Libby Parsons. Falsely accused of murdering her husband, Libby finds herself sentenced to prison for a crime she did not commit. As she navigates the harsh realities of incarceration, Libby discovers a shocking truth: her husband is alive and well, having faked his death to frame her. Released on parole, Libby embarks on a relentless quest for justice. Determined to reunite with her son and clear her name, she takes advantage of the legal principle of double jeopardy, realising that she cannot be tried for the same crime twice. In a race against time, Libby must outsmart the law and track down her deceitful husband while staying one step ahead of a zealous parole officer.



Director's Biography : Bruce Beresford has made more than 30 feature film over 50 year career, both locally & internationally in the United States. He grew up in the then outer-western suburb of Toongabbie, and went to The Meadows Public School and then The King's School, Parramatta. He made several short films in his teens including *The Hunter* (1959).